

All In One Monoblock DC Inverter

Heat pump Water Heater

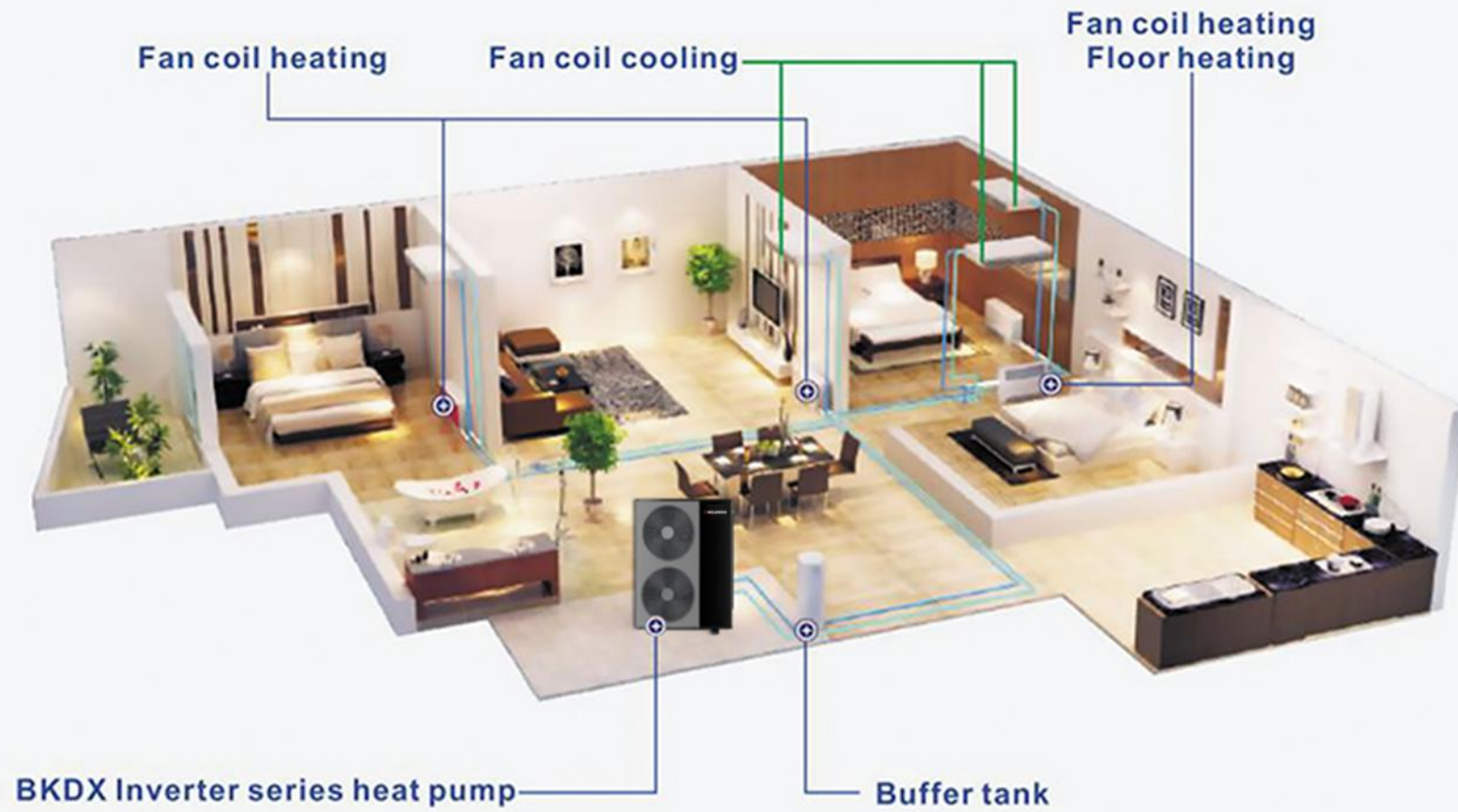
Parameters

Dc Inverter Heat Pump			NELUMBO Inverter 10	NELUMBO Inverter 15	NELUMBO Inverter 20
Rated heating capacity	KW		2.8~10	3.8~15.5	4.5~20
Rated hot water capacity	KW		2.5~9.5	3.5~15	4.0~19.4
Rated cooling capacity	KW		2.5~7.5	3.8~10	4.5~14
Power consumption	KW		1~3	1.5~4.5	2~5.5
Voltage	V/Hz		220V-240V - Inverter-1N	380V-415V ~ Inverter ~ 3N	
Rated heating water temperature	°C		Hot water: 55C / heating:45C / cooling:12C		
Rated water flow	m³/h		1.7	2.7	3.5
Refrigeration	/		R410	R410a	R410a
Compressor	/		Mitsubishi	Mitsubishi	Mitsubishi
Outdoor unit	Net size	mm	996*470*1000	996*470*1000	996*470*1385
	Weight	Kg	100	110	150
	Nosie level	dB(A)	≤50	≤50	≤52
Heat exchanger	/		Sweden SWEP Plate heat exchanger		
Fan	Form		Full DC fan motor		
Auxiliary Element	built-in	KW	√	√	√
Circulation pump	built-in	Wilo	√	√	√
Expansion tank	built-in	L	√	√	√
Ambient temperature	°C		(-25°C – 43°C)		
Water Outlet / Inlet pipe diameter			DN25	DN25	DN25

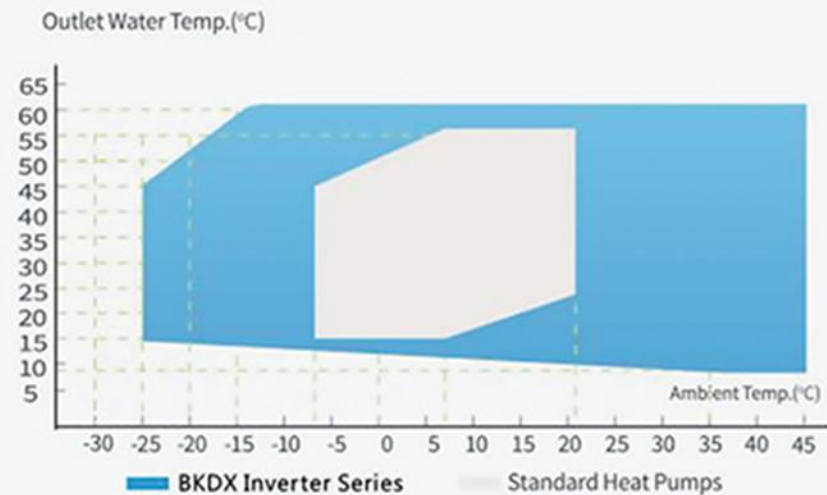
Wifi



Eco-friendly Application

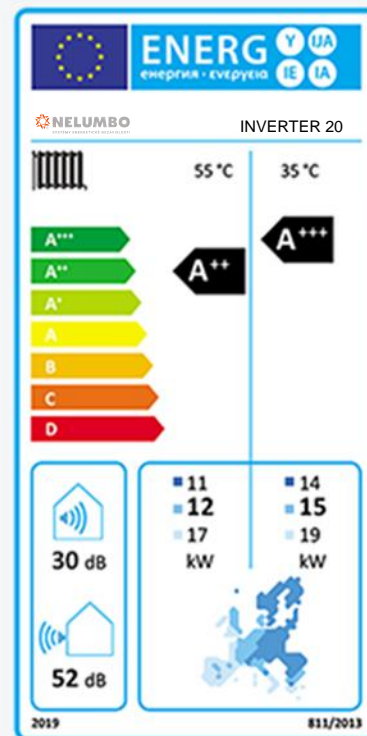


Advanced Performance



Water Temp. up to 60°C, 75%energy saving

Thanks to dc inverter technology, BKDX inverter series features a wide operating temperature. It means they can reach high temperature 60°C even in cold climate ranging from -25°C to 43°C, and can work safety and high efficiency.



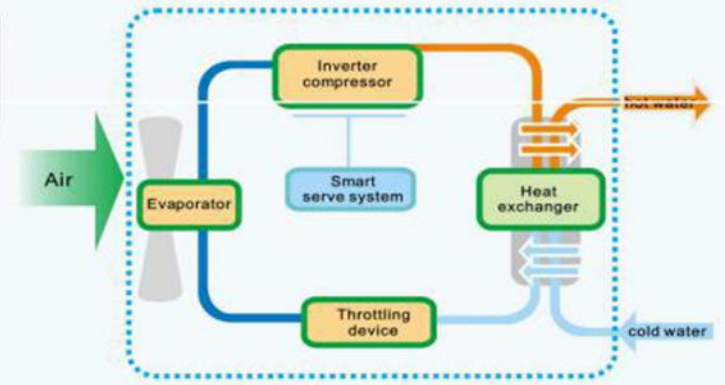
High COP

Adopting R410A refrigerant and circulating heating method, BKDX Inverter Series heat pump is able to keep its energy efficiency high.

Inverter Technology Principle



Adopting Mitsubishi inverter dedicated compressor. Which designed for the low temperature operation specially, -25°C running stably.



Provide You Trouble-free Shower



Automatic Heating

As soon as water temperature for shower drops to the setpoint, the heat pump starts working so as to ensure constant shower.



Short Heating Time

Hot water can be supplied in a short time within 1hr as the inlet water temperature is greatly higher than that of the tap water.



Extended Shower Time

With sufficient hot water supply and fast heating technology, the heat pump covers the hot water requirement of a whole family.



Easy & Clear Control

The clear controller display, specially designed makes it easy for users to power on/off, set temperature, timer and heating/defrosting mode.

Multi-protection, Long Service Life



Water Flow Switch Protection

When water inlet volume is low, the unit stops to protect the system. When the water volume recovers, the unit starts working again.

Antifreezing Protection

When the unit is standby and water inlet temp. is lower than 4°C but higher than 2°C, the water pump starts up to protect the system.

High/Low Pressure Protection

High/Low pressure switches will switch off the heat pump automatically to protect the whole system when the pressure is over high/low.

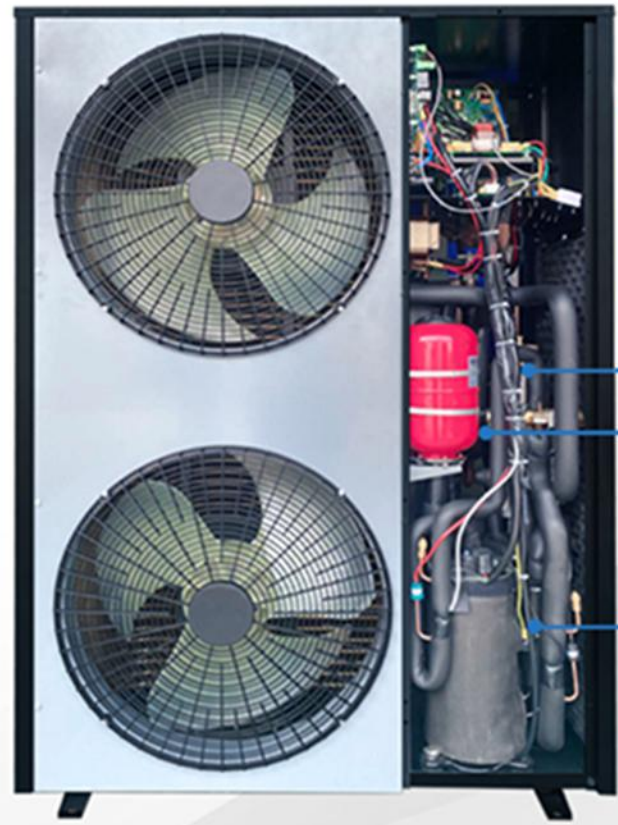
High Discharging Temp. Protection

When the compressor discharging temp. is higher than 110°C, the unit will not work until the temperature is lower than 85°C.

Compressor Overload protection

When the compressor is working overload, the unit will stop working to protect the whole system.

Product advantages



Electric Heater

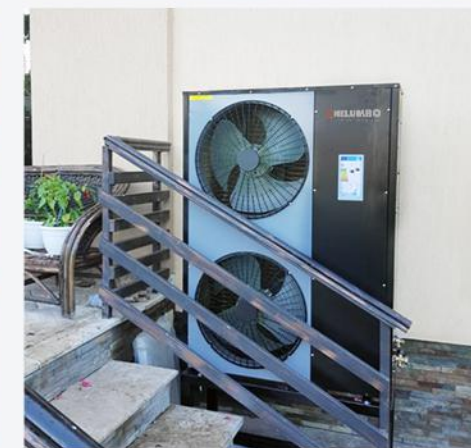


Expansion Tank



Circulating Pump

Installation cases



Production installation

