

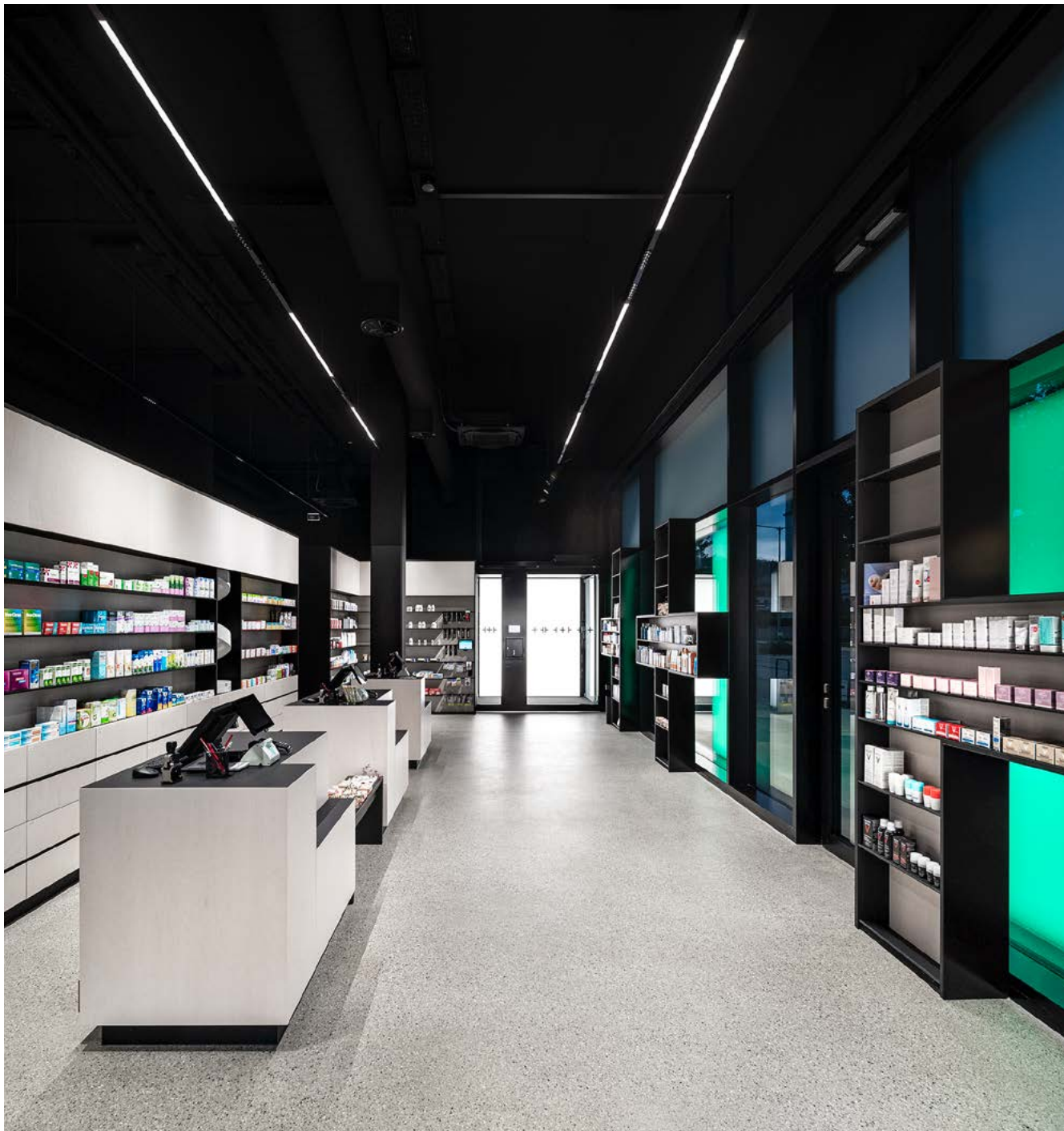


ZUMTOBEL



**SUPERSYSTEM INTEGRAL**

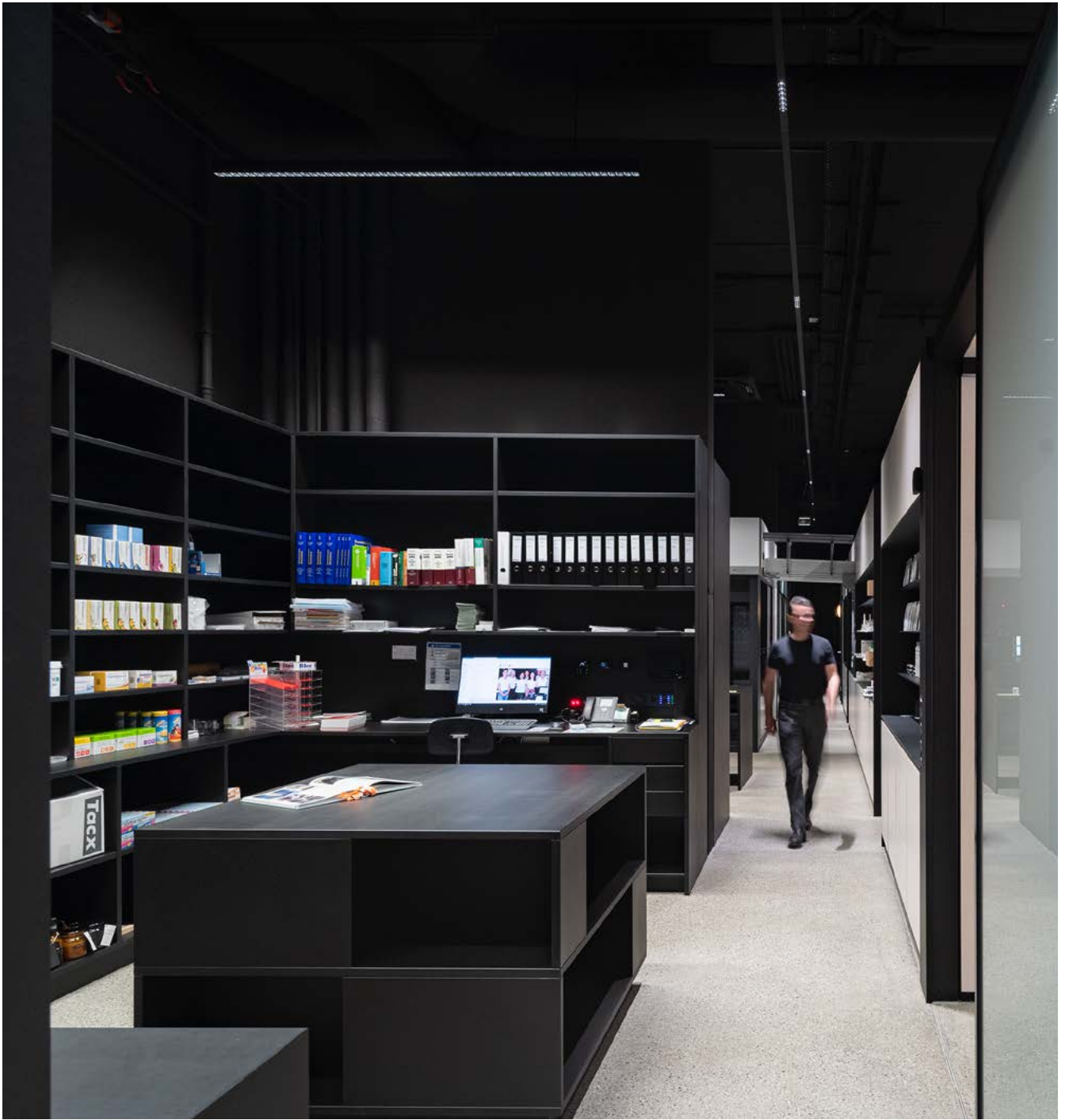
SEAMLESS AND LINEAR



Pharmacy Tosters, Feldkirch | AT

Architect: Zaffignani Architektur GmbH, Weiler | AT

CI and cross installation design: Atelier Andrea Gassner, Feldkirch | AT





## **N O M E N   E S T   O M E N**

**Integral. Because variety integrates perfectly into architecture.**

The defining feature of the entire product group is seamless linearity – regardless of whether SUPERSYSTEM is used integrally as a single luminaire or installed on a track. Surface-mounted, recessed or pendant. Even with a channel, if required. And for the first time, this solution can be used for all types of lighting, from horizontal to vertical, from indirect to accent lighting.



SUPERSYSTEM integral Synchro Gimbal  
and LED maxi Spotlight | 3-phase track

*“The comprehensive planning tool is based on the poetic idea of stringently miniaturising the spotlight heads, enabling them to be perfectly integrated into a continuous linear structure. The system magically emits light from a slender groove as a recessed or track fitting. SUPERSYSTEM integral even makes it possible to adapt existing track installations, which improves efficiency and saves resources – and helps this system make an important contribution as a sustainable design solution.”*

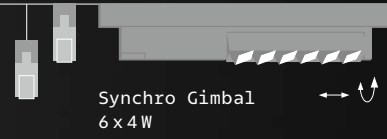


Harald Gründl,  
Designer, E00S | AT

**SURFACE-MOUNTED AND  
PENDANT LUMINAIRES**

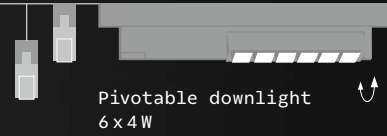
**3-phase AC track**  
U and H profile

Accent lighting  
Synchro Gimbal



Synchro Gimbal  
6 x 4 W

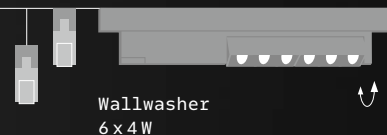
Horizontal lighting  
Downlights



Pivotal downlight  
6 x 4 W

Indirect lighting

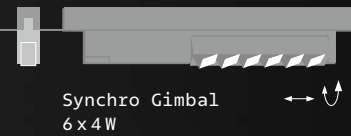
Wallwashing



Wallwasher  
6 x 4 W

**RECESSED LUMINAIRES**

Accent lighting  
Synchro Gimbal



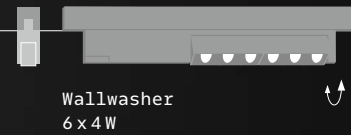
Synchro Gimbal  
6 x 4 W

Horizontal lighting  
Downlights



Pivotal downlight  
6 x 4 W

Wallwashing



Wallwasher  
6 x 4 W

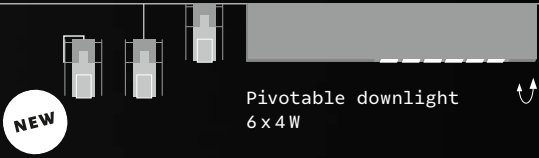
3-phase track AC channel  
U and H profile

Surface-mounted  
luminaire

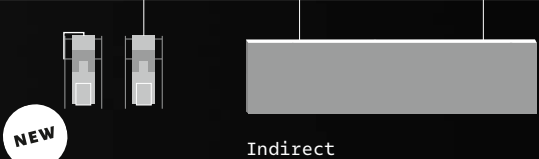
Recessed  
luminaire



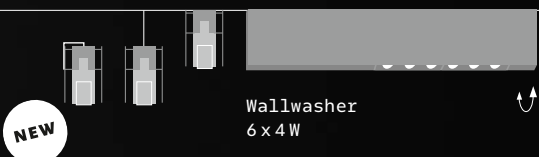
Synchro Gimbal  
6 x 4 W



Pivotal downlight  
6 x 4 W



Indirect  
15 W



Wallwasher  
6 x 4 W



Downlight Q  
surface-mounted  
6 x 4 W



Downlight Q  
recessed luminaire  
6 x 4 W, 9 x 4 W



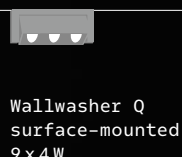
Synchro Gimbal  
6 x 4 W



Pivotal downlight  
6 x 4 W



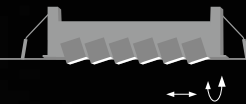
Wallwasher  
6 x 4 W



Wallwasher Q  
surface-mounted  
9 x 4 W



Wallwasher Q  
recessed luminaire  
6 x 4 W, 9 x 4 W



Synchro Gimbal  
recessed luminaire  
6 x 4 W



Recessed downlight  
3 x 4 W



Recessed downlight  
6 x 4 W



Recessed downlight  
9 x 4 W



Recessed wallwasher  
9 x 4 W



**Recessed**  
Stand-alone

**Surface-mounted**  
3-phase track





**Pendant**  
3-phase track  
with channel cover

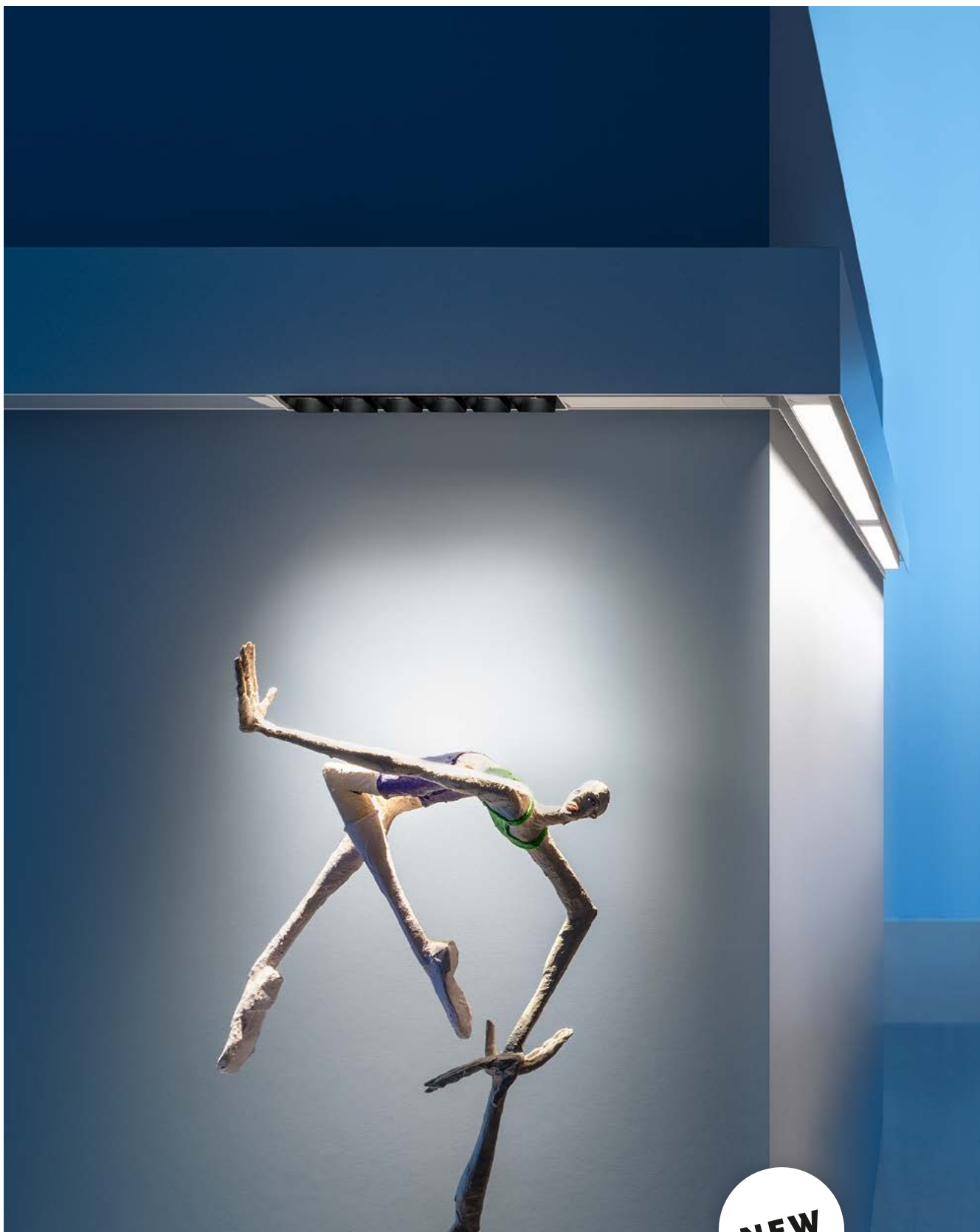


**Recessed**  
3-phase track  
in a channel



**NEW**

Surface-mounted Downlight  
Recessed Downlight  
Wallwasher



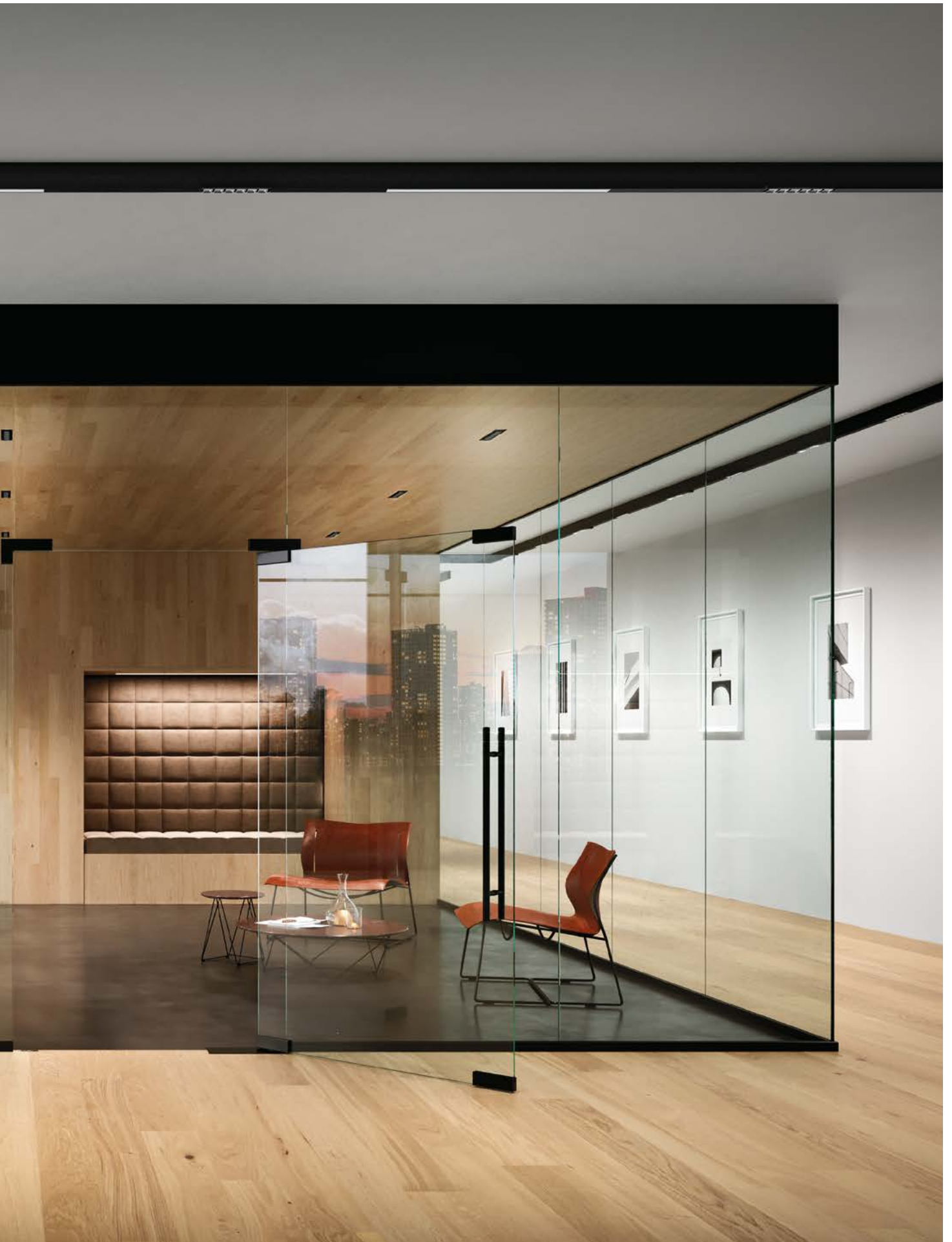
**NEW**

Surface-mounted wall luminaire  
(3-phase track in the trunking)











Surface-mounted wall luminaire  
(3-phase track in the trunking)







## A NEW LOOK FOR TRACKS

### **Integral. Because the lighting is quickly modernised.**

A track is still as good today as it has always been. That is why it is now being reused to modernise lighting with the help of SUPERSYSTEM. Yet rather than any kind of mishmash, the result is a thoroughly straightforward solution. Very economical and very efficient. And the architectural benefit? Both tracks and stand-alone luminaires speak the same design language.



#### **On a line with the 3-phase track**

All the luminaires in the SUPERSYSTEM integral collection and even the adapters of the SUPERSYSTEM spots form a continuous line. If desired, the gaps can be closed with a blind cover.

#### **With a channel cover**

For a closed lighting solution that is reduced to an absolute minimum, both the new luminaires and the channel cover are simply clicked on.

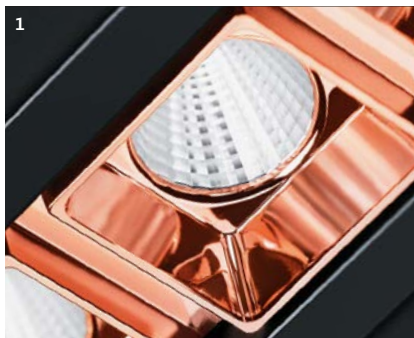


## PURE DESIGN

### **Integral. Because everything fits together perfectly.**

Each individual luminaire fits the dimensions of the track. Fixed, rotatable and pivotable – the difference is hardly visible on the outside. Even the wallwasher blends discreetly into the system.

High-quality surfaces complete the minimalist look, which nevertheless offers a high degree of personalisation. Luminaires and base reflectors can be combined in any colour.



- 1 Copper base reflector
- 2 Device box with lock
- 3 Synchro Gimbal function
- 4 Aluminium-sputtered base reflector

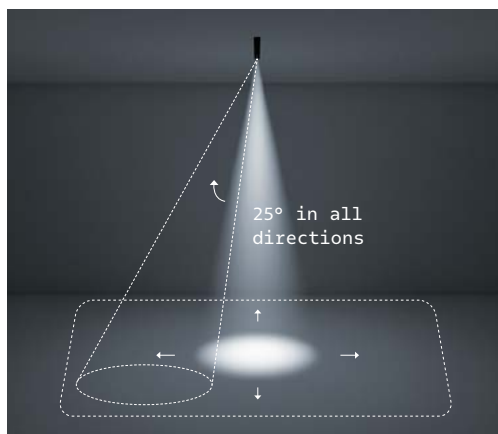
**Luminaire and cover:**  
Black, White

**Base reflector:**  
Black, White, Aluminium-sputtered, Copper

SUPERSYSTEM integral Synchro Gimbal  
Blind cover | 3-phase track | surface-mounted



## LUMINAIRES WITH SYNCHRO GIMBAL FUNCTION



### THE NEW GIMBAL ACCENT LIGHTING

For a long time it seemed impossible to create a rotating cone of light with a linear luminaire. Now SUPERSYSTEM integral shows how it can be done, as synchronously tiltable reflectors and a pivotable light head rise to the challenge. The cones of light are homogeneous, are available in different beam angles and can be moved in all directions. This is precisely alignable accent lighting that always looks linear.



**SYNCHRO GIMBAL TRACK**

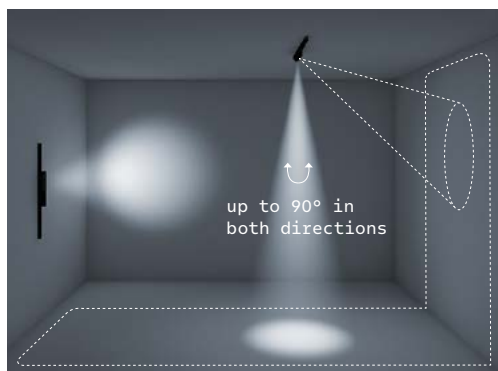


**SYNCHRO GIMBAL RECESSED LUMINAIRE**

<b>Function</b>	synchronous tilting up to 2x25° pivots up to 2x25° in the channel pivots up to 2x90° on the track	synchronous tilting up to 2x25° pivots up to 2x25°
<b>Dimensions</b>	398 x 35 x 76 mm	230 x 50 x 47 mm
<b>Mounting</b>	3-phase track with/without channel surface-mounted, pendant, recessed	installation with or without frame
<b>System capacity</b>	6 x 4 W LED	6 x 4 W LED
<b>Colour temperature</b>	2700 K, 3000 K, 4000 K; SDCM2	3000 K, 4000 K; SDCM2
<b>Colour rendering</b>	Ra > 90	Ra > 90
<b>Luminaire luminous flux</b>	1450 to 1800 lm	1450 to 1800 lm
<b>Lighting angle</b>	Spot 12°, Flood 27°, Very Wideflood 49°	Spot 12°, Flood 27°, Very Wideflood 49°
<b>Glare limitation</b>	in non-tilted position: UGR < 0; viewing angle < 45°	in non-tilted position: UGR < 0; viewing angle < 45°
<b>Base reflector colour</b>	white, black, copper, aluminium-sputtered	white, black, copper, aluminium-sputtered
<b>Control</b>	DALI dimmable, basicDIM Wireless	DALI dimmable, basicDIM Wireless

SUPERSYSTEM integral pivotable downlight  
Blind cover | 3-phase track | surface-mounted

## LUMINAIRES WITH PIVOTABLE LIGHT HEAD



### DOWNLIGHTS FOR ILLUMINATING HORIZONTAL AND VERTICAL SURFACES

The light heads can be moved on the track in both directions by 90 degrees. They can also be moved 25 degrees in both directions in the channel. This allows recessed luminaires to fulfil a wide variety of lighting tasks. SUPERSYSTEM integral rounds off this flexible type of vertical and horizontal surface lighting with a high level of brilliance and outstanding glare control.





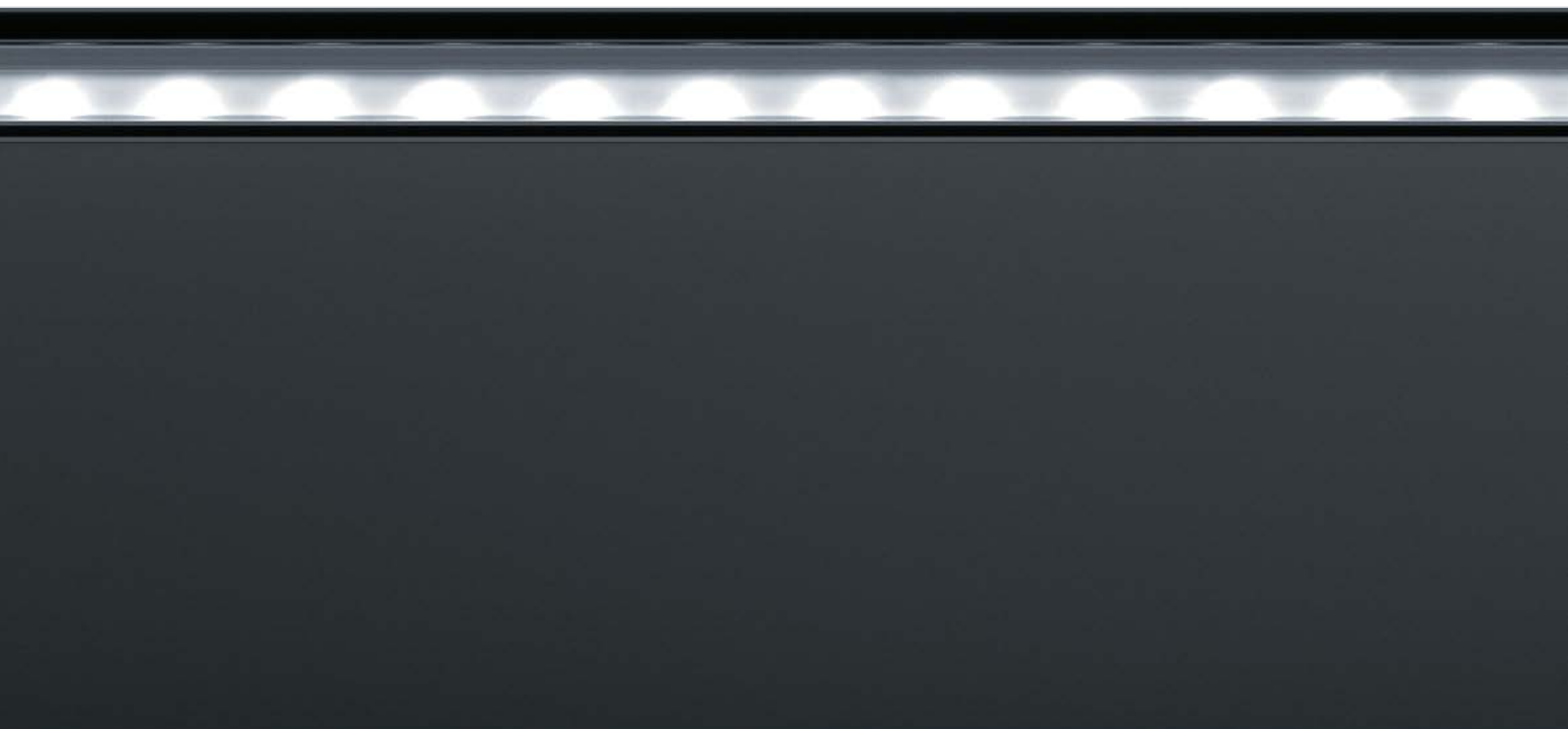
**PIVOTABLE DOWNLIGHT**

<b>Function</b>	pivots up to 2x25° in the channel pivots up to 2x90° on the track
<b>Dimensions</b>	398 x 35 x 76 mm
<b>Mounting</b>	3-phase track with/without channel surface-mounted, pendant, recessed
<b>System capacity</b>	6 x 4W LED
<b>Colour temperature</b>	3000K, 4000K; SDCM2
<b>Colour rendering</b>	Ra > 90
<b>Luminaire luminous flux</b>	1700 to 2100lm
<b>Lighting angle</b>	Spot 12°, Flood 27°, Very Wideflood 49°
<b>Glare limitation</b>	in non-tilted position: UGR < 0; viewing angle < 45°
<b>Base reflector colour</b>	white, black, copper, aluminium-sputtered
<b>Control</b>	DALI dimmable, basicDIM Wireless

**WALL MOUNTING**

The option to mount the downlight horizontally or vertically on the wall means that areas like window displays in shops can also be highlighted from the side. This is because the pivoting mechanism remains unrestricted at all times to ensure maximum flexibility.

SUPERSYSTEM integral indirect  
3-phase track | H profile | channel | pendant

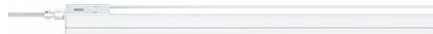


## INDIRECT LIGHTING



### THE LIGHT COMPONENT FOR WELL-BEING

Direct and indirect luminaires in the H track simultaneously fulfil essential lighting tasks and create a cosy ambience. Homogeneously illuminated ceilings are thereby able to exploit all the possibilities of direct lighting. With total linearity. Power for all luminaires is provided via the 3-phase track, which also transmits control commands for individual lighting scenarios.



### INDIRECT LUMINAIRE

<b>Dimensions</b>	1300 x 37 x 28 mm, device box 160 x 35 x 76 mm ideal distance to ceiling > 0.5m
<b>Mounting</b>	in H profile and channel
<b>System capacity</b>	15W LED
<b>Colour temperature</b>	3000 K, 4000 K; SDCM3
<b>Colour rendering</b>	Ra > 80
<b>Luminaire luminous flux</b>	1980 to 2070lm indirect
<b>Light distribution</b>	Batwing 2 x 58°
<b>Control</b>	DALI dimmable, basicDIM Wireless



### MODULAR DESIGN

At the top, the indirect luminaire. At the bottom, in a row with the direct modules, the device box. And in the middle, the H track. All beautifully concealed in a channel. A rich variety of cutting-edge lighting technology comes together in the smallest of spaces.

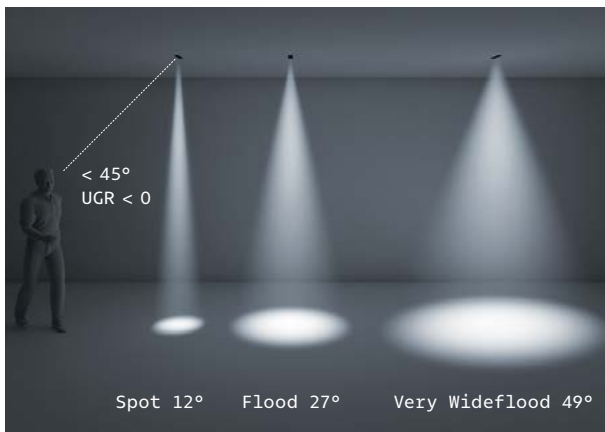
SUPERSYSTEM integral recessed downlight  
9x4W | aluminium-sputtered reflector | black frame



SUPERSYSTEM integral recessed downlight  
3x4W | white reflector | white frame



## RECESSED DOWNLIGHT



### HORIZONTAL SURFACE LIGHTING WITH EMERGENCY LIGHTING OPTION

SUPERSYSTEM integral offers lighting designers plenty of scope for illuminating horizontal surfaces. Various lumen packages, lighting angles and colour constellations help establish this compact downlight as a highly adaptable lighting tool. Even safety lighting can be almost invisibly integrated thanks to the emergency lighting option. With low luminance levels and a high level of visual comfort, the SUPERSYSTEM integral collection is also ideal for use in foyers, access zones and office spaces.



SUPERSYSTEM integral recessed downlight  
6x4W | copper reflector | black frame



**RECESSED DOWNLIGHT**

<b>Dimensions</b>	DF3: 125x50x47mm - Replacement for downlights with a diameter of 68mm DF6: 230x50x47mm - Replacement for downlights with a diameter of 100mm   140mm DF9: 335x50x47mm - Replacement for downlights with a diameter of 140mm   190mm
<b>Mounting</b>	recessed with frame
<b>System capacity</b>	3x   6x   9x4W LED
<b>Colour temperature</b>	2700K, 3000K, 4000K; SDCM2
<b>Colour rendering</b>	Ra > 90
<b>Luminaire luminous flux</b>	DF3: 800 to 100lm DF6: 1700 to 2000lm DF9: 2700 to 3000lm
<b>Lighting angle</b>	Spot 12°, Flood 27°, Very Wideflood 49°
<b>Glare limitation</b>	UGR < 0; viewing angle < 45°
<b>Base reflector colour</b>	white, black, copper, aluminium-sputtered
<b>Control</b>	DALI dimmable, basicDIM Wireless emergency escape lighting (single and central battery)

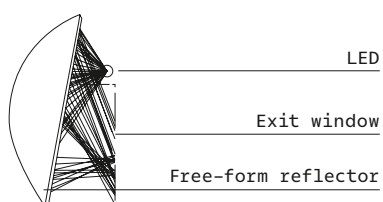


## WALLWASHER



### ASYMMETRICAL ILLUMINATION OF VERTICAL SURFACES WITHOUT LIGHT SCATTER

The miniaturised version of the liteCarve® free-form reflector now makes it possible. This solution emits 100 percent of the light directly, purposefully and evenly onto the vertical surface – with no glare and no light scatter on the front wall or ceiling. The integration of the design is just as sophisticated. The wallwasher fits precisely into the lines of the SUPERSYSTEM integral collection – both on the track and as a stand-alone version.



**Technical highlight:** The patented liteCarve® free-form reflector creates a rectangular cone of light from a round half disc. Homogeneous and perfectly glare-free.



**WALLWASHER**



**RECESSED WALLWASHER**

<b>Function</b>	pivots up to 2x25° in the channel pivots up to 2x90° on the track	
<b>Dimensions</b>	398x35x76 mm ideal distance between the luminaires 0.8-1m, for the vertical surface > 40% of the installation height	335x50x47 mm ideal distance between the luminaires 0.8-1m, for the vertical surface > 40% of the installation height
<b>Mounting</b>	3-phase track with/without channel. surface-mounted, pendant, recessed	recessed with frame
<b>System capacity</b>	6 x 4W LED	9 x 4W LED
<b>Colour temperature</b>	3000K, 4000K; SDCM2	3000K, 4000K; SDCM2
<b>Colour rendering</b>	Ra > 90	Ra > 90
<b>Luminaire luminous flux</b>	from 900 to 1000lm	from 1300 to 1500lm
<b>Lighting angle</b>	asymmetrical	asymmetrical
<b>Base reflector colour</b>	white, black	white, black
<b>Control</b>	DALI dimmable, basicDIM Wireless	DALI dimmable, basicDIM Wireless

SUPERSYSTEM integral linear  
3-phase track | surface-mounted



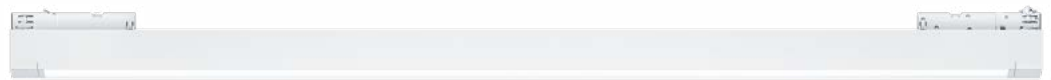
## LIGHT LINE



### **HOMOGENEOUS LIGHT FOR HORIZONTAL SURFACES FROM FLEXIBLE, NARROW LINES**

The biggest advantage of a lighting solution on tracks is its flexibility. However, providing multi-functional spaces such as lobbies, co-working spaces or shops with homogeneous, horizontal light does not require wide luminaires. What is required is wide, symmetrical light distribution. SUPERSYSTEM integral linear provides this via a high-quality, aluminium-sputtered polycarbonate primary reflector unit. Multi-layered MPO+ technology helps keep the light perfectly glare-free. The UGR value < 19 meets the requirements of EN 12464-2011 for the lighting of indoor workplaces.





**LIGHT LINE**

<b>Optics</b>	micro-pyramidal optics opal optics
<b>Dimensions</b>	837 x 35 x 76 mm 1085 x 35 x 76 mm 1333 x 35 x 76 mm
<b>Mounting</b>	3-phase track with/without channel surface-mounted, pendant, recessed
<b>System capacity</b>	14 W   21 W   27 W LED
<b>Colour temperature</b>	3000 K, 4000 K; SDCM2
<b>Colour rendering</b>	Ra > 90
<b>Luminaire luminous flux</b>	1300 lm   1800 lm   2300 lm
<b>Lighting angle</b>	symmetrical, 62°
<b>Glare limitation</b>	UGR < 19
<b>Control</b>	dimmable DALI

**TOOL-FREE INSTALLATION ON THE TRACK**

A precise double locking mechanism on both ends of the light line secures the luminaire – even when mounted horizontally or vertically on the wall.



# CEILING- AND WALL-MOUNTED LUMINAIRES

## SQUARE FLEXIBILITY

Horizontal and vertical lighting in the smallest of spaces: the square luminaire with an edge length of 110 mm can be flexibly equipped with various 3-unit modules. Downlights with beam angles of 12°, 27° and 49° as well as wallwashers take on individual lighting tasks. Even in narrow corridors, horizontal surfaces can be illuminated and the walls attractively highlighted at the same time. Complemented by various colour constellations of reflectors and luminaires, the result is an attractive modular system for a uniquely compact lighting tool. For ceiling or wall, surface-mounted or recessed.



**SURFACE-MOUNTED**

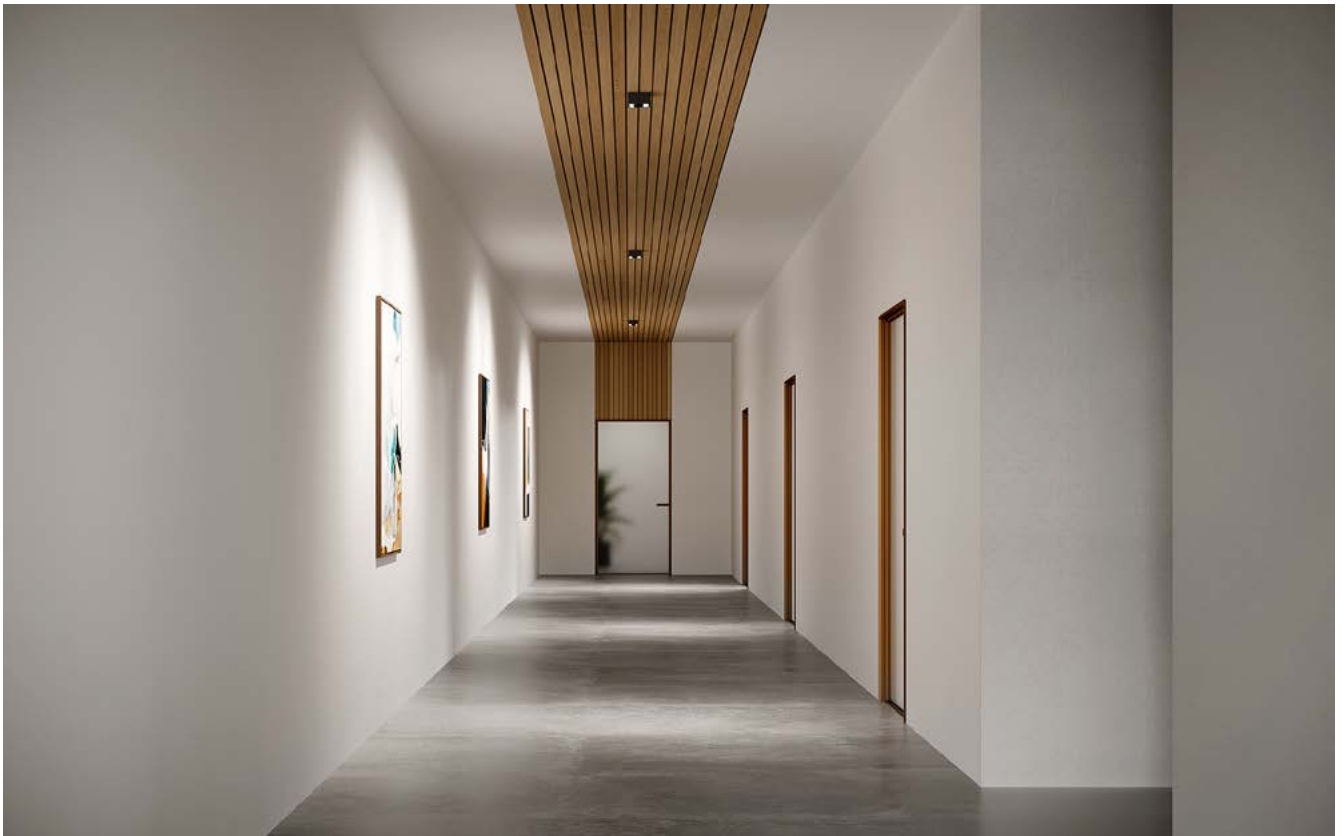


**RECESSED**



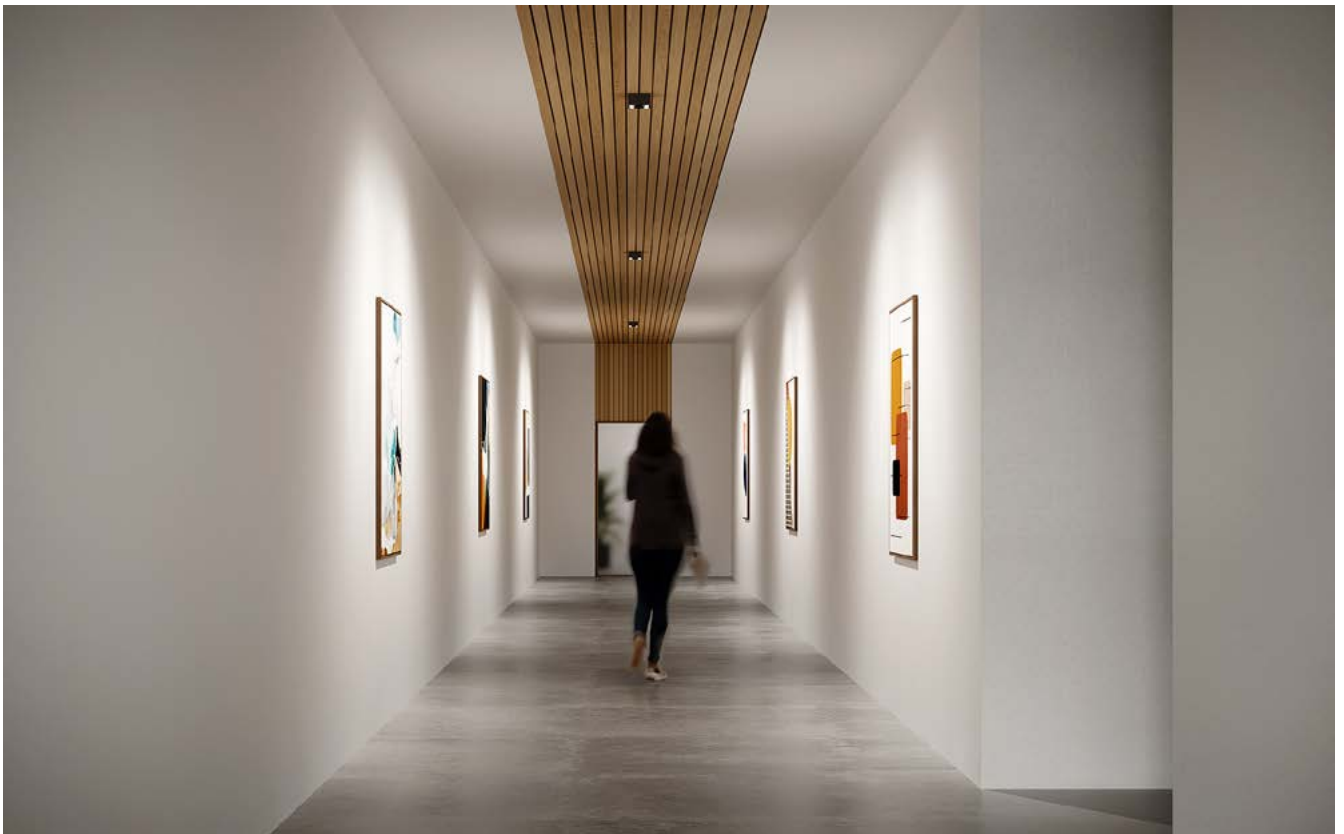
**WALL-MOUNTED**

	<b>SURFACE-MOUNTED</b>	<b>RECESSED</b>	<b>WALL-MOUNTED</b>
<b>Function</b>	downlight, single or double-sided wallwasher	downlight, wallwasher	surface-mounted wall luminaire (direct/indirect), single- or double-sided surface-mounted wall luminaire
<b>Dimensions</b>	120 x 120 x 65 mm (SF6) 120 x 120 x 69 mm (SF6 WW) 120 x 120 x 70 mm (SF6 IP44)	124 x 124 x 48 mm	120 x 121 x 55 mm
<b>Mounting</b>	surface-mounted	recessed with frame	wall-mounted
<b>System capacity</b>	6 x 3.1W LED	9 x 3.4W LED (3x wallwasher) 9 x 4W LED (3x downlight)	18.7W (direct/indirect) 10.7W (direct)
<b>Colour temperature</b>	2700K, 3000K, 4000K; SDCM2		
<b>Colour rendering</b>	Ra > 90		
<b>Luminaire luminous flux</b>	up to 1700lm	up to 1600lm (3x wallwasher) up to 3300lm (3x downlight)	up to 1700lm
<b>Lighting angle</b>	Symmetrical Spot 12°, Flood 27°, Very Wideflood 49° single or double-sided, asymmetric		
<b>Glare limitation</b>	UGR < 13	UGR < 13	UGR < 25
<b>Base reflector colour</b>	white, black, copper, aluminium-sputtered		
<b>Housing colour</b>	white, high-gloss white, black, high-gloss black, concrete grey	white, black	white, high-gloss white, black, high-gloss black, concrete grey
<b>Protection class</b>	IP20, IP44 with glass	IP20	IP20
<b>Control</b>	switchable, DALI dimmable, basicDIM Wireless		



Wallwasher/Spot

Wallwasher/Wallwasher





Spot/Spot

Surface-mounted wall luminaire  
(direct/indirect)





SUPERSYSTEM inline with integrated sensor



Recessed Haufe  
baffle ceiling



Surface-mounted  
luminaire



Pendant  
luminaire

# SUPERSYSTEM INLINE

## SLIMLINE INDIVIDUAL LUMINAIRES FOR THE LIGHTING OF HORIZONTAL SURFACES

Whether surface-mounted, suspended or integrated in baffle ceilings without using tools: uniform and glare-free light with a UGR value < 19 and 2000 lumen per running metre make SUPERSYSTEM inline an EN 12464-2011-compliant light line for

workplaces. Three different lengths and the option of combining linear luminaires with recessed downlights for brilliant accents offer creative freedom. The luminaires are ideal for baffle ceilings and come with springs for Haufe ceiling systems as standard.

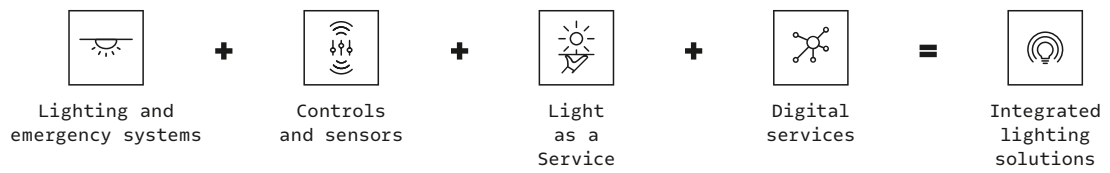


### INLINE LIGHT LINE

### INLINE RECESSED DOWNLIGHT

<b>Optics</b>	micro-pyramidal optics, optional opal optics	6 miniaturised individual light heads
<b>Dimensions</b>	1018x38x25mm (mounting 75mm incl. driver housing) 1266x38x25mm (mounting 75mm incl. driver housing) 1514x38x25mm (mounting 75mm incl. driver housing)	218x38x101mm (incl. driver housing)
<b>Mounting</b>	recessed, surface-mounted, pendant; special springs for Haufe ceiling systems as standard	recessed; special springs for Haufe ceiling systems
<b>System capacity</b>	21W   26W   32W LED	25W LED
<b>Colour temperature</b>	3000K, 4000K; SDCM2	3000K, 4000K; SDCM2
<b>Colour rendering</b>	Ra > 90	Ra > 90
<b>Luminaire luminous flux</b>	2000lm   2500lm   3000lm	1800lm
<b>Lighting angle</b>	symmetrical 62°	symmetrical Spot 12°, Flood 27°, Very Wideflood 49°
<b>Glare limitation</b>	UGR < 19	UGR < 13; viewing angle < 45°
<b>Base reflector colour</b>	-	white, black, copper, aluminium-coated
<b>Control</b>	dimmable DALI	switchable, dimmable DALI, basicDIM Wireless

# T H E L I G H T



[zumtobel.com/contact](https://zumtobel.com/contact)