

ApenGroup



Industrial Heating Solutions **2019**

ApenGroup[®]
aermaxline



Why Choose AH-DOC:

- Safety, ecological, advanced technology of premixing modulation.
- Saves 50 % on fuel consumption.
- Highest efficiency on a market - up to 108 % (condensing model)
- Clean combustion - minimum emission of nitrogen oxides, carbon dioxide, carbon monoxide.
- Outdoor and indoor installation available.
- Simple and standard chimney applications.
- Environmental friendly.
- Modern and lighth design.



DDMP Fan

New high efficiency EC-motor, compact and streamlined motor design.

High intensity neodymium magnets.

No obstruction of intake due to build-on control unit - less aerodynamic losses

Electronic Control

AH-DOC heaters are equipped with a PCH module controlled by an electronic board managing burner's start, stop and modulation as well as faults display.



Fixed Point with Room Compensation

Temperature control is made with "a Fixed Point with Room Compensation", gas module's start and stop are adjusted following room's heat demand.

Modulating Heat

PCH module in AH-DOC works with modulation and grants efficiency up to 108%.

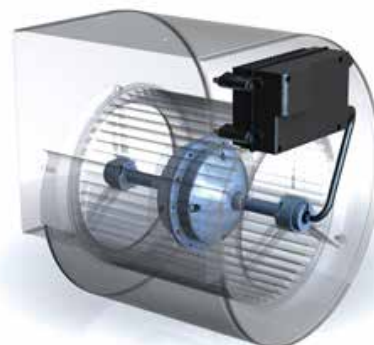


AH-DOC

AH-DOC heaters are equipped with a PCH module controlled by an electronic board managing burner's start, stop and modulation as well as faults display

Technical Features

- Efficiency up to 108%.
- PCH Condensing heat exchanger module housed inside.
- CPU-SMART control board for faults management and display, burner's modulation, start and stop.
- Gas module's start and stop adjusted following room's heat demand.
- Modulating temperature regulation with PID control both on the room temperature and on the delivery temperature.
- DDMP fans with integrated high efficiency inverter. The EC-motor operates without slip losses and thus consumes significantly less power than conventional AC motors.
- Power supply 430V/3F/50Hz.
- Variable air flow.
- Ethernet connection with remote intranet computer control via browser.
- Outdoor installation.
- PCH module with modulating functioning.
- Temperature control with "a Fixed Point with Room Compensation" through a probe on outlet section (NTC1).
- Adjustable air flow controlled by potentiometer.



SMARTWEB

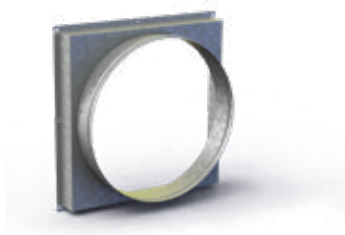
New Apen Group's remote control SMARTWEB perform the function of standalone chronothermostat.



Square / Round Nosepiece Kit

It allows to adjust heater's square sections for outlet or inlet to a round section for the connection of textile ducts. The kit is composed by:

- Shaped duct in galvanized sheet.
- Bands for tarpaulin fastening.
- Screws for duct fixing



Fireproof Damper Kit

It can be assembled both in inlet and outlet sections as sections dimensions are identical.

All the dampers have the following features:

- EI1205 Fire reaction.
- Tunnel made of galvanized sheet - 510 mm width.
- Thermal circuit breaker with fuse calibrated at 72°C
- IP55 switch already assembled on the damper.
- The dampers are supplied with certificate.

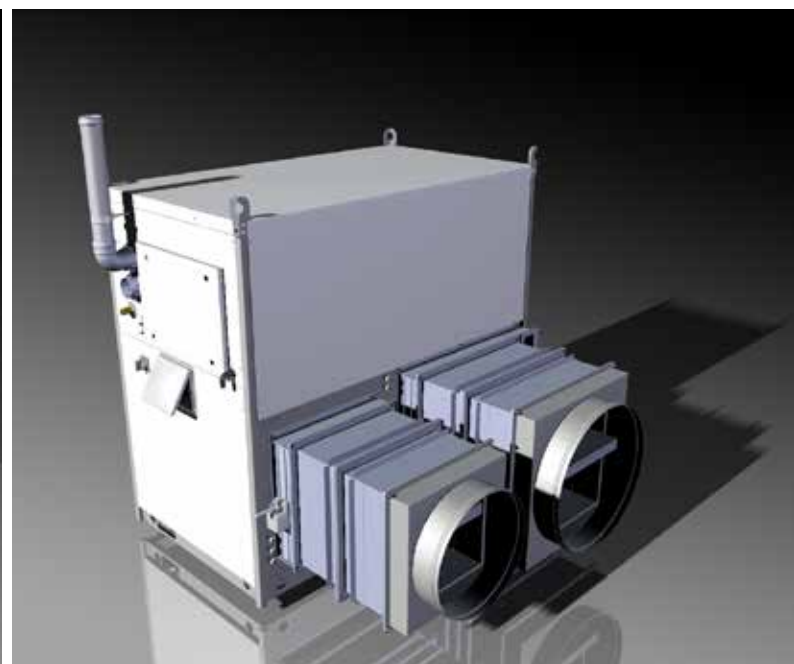


Outdoor Air Control Damper

The air control damper is assembled to the heater and it is supplied with manual opening/closing control. On demand, it can be supplied with modulating or ON/OFF servomotor.

Accessories on Request

- Snow Control Kit: allows starting the burner in case of presence of snow if it is turned off.
- Anemometer Kit.
- Windproof Fume Terminal Kit.



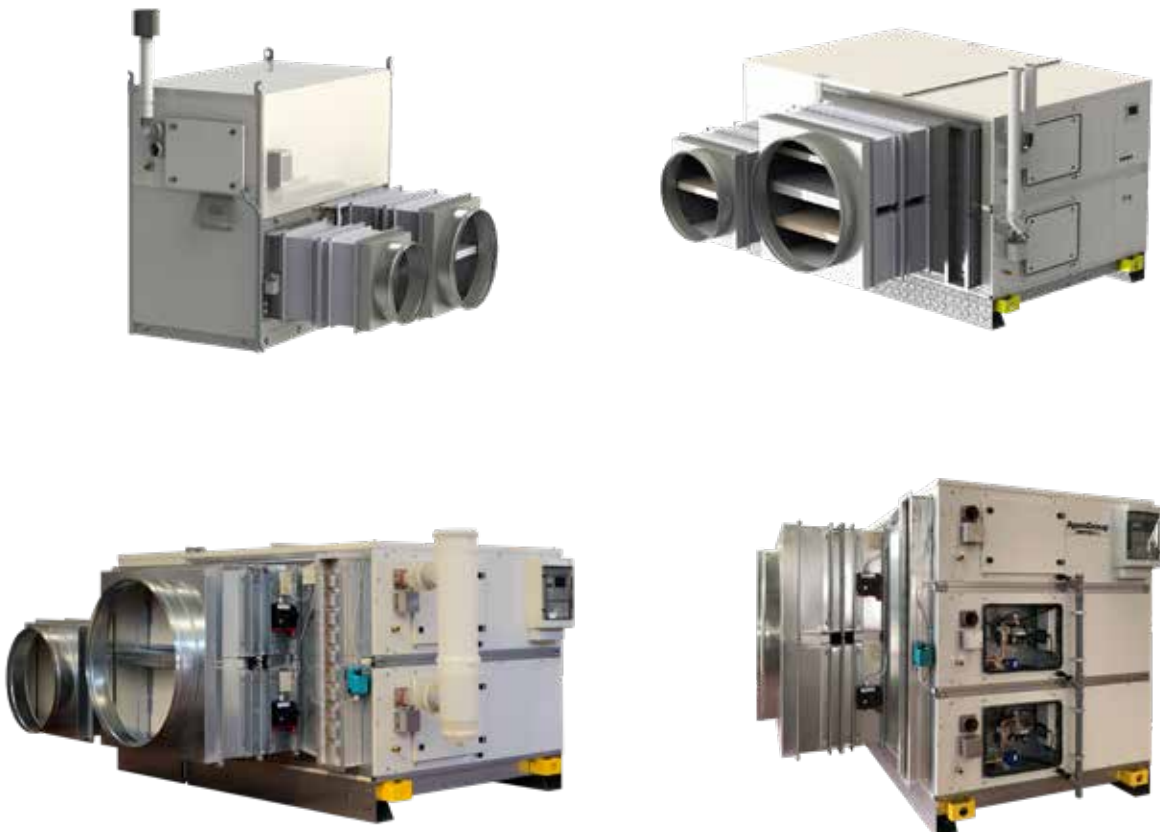


For Tensostatic Roof Coverings

Model	Air Flow	Available Static Pressure	Heat Output		Efficiency		Motors
	m³/h		min (kW)	max (kW)	min (%)	max (%)	
AH105IT-T	7.500	150	22,77	97,15	108,40	97,15	2x0,8
AH160IT-T	14.200	150	35,54	160,06	108,35	97,60	4x0,8
AH210IT-T	17.400	300	44,54	194,30	108,42	97,15	4x2,0
AH240IT-T	22.500	150	53,31	240,09	108,35	97,60	6x0,8
AH320IT-T	26.100	300	68,31	291,45	108,42	87,25	6x2,0

For Pressostatic Structures

Model	Air Flow	Available Static Pressure	Heat Output		Efficiency		Motors
	m³/h		min (kW)	max (kW)	min (%)	max (%)	
AH105IT-P	8.700	300	22,77	97,15	108,40	97,15	2x2,0
AH160IT-P	16.200	300	35,54	160,06	108,35	97,60	4x2,0
AH210IT-P	17.400	300	44,54	194,30	108,42	97,15	4x2,0
AH240IT-P	26.100	300	53,31	240,09	108,35	97,6	6x2,0
AH320IT-P	26.100	300	68,31	291,45	108,42	87,25	6x2,0



ApenGroup[®]
aermaxline

APEN GROUP S.p.A.
Via Isonzo, 1 - Pessano con Bornago
20060 (Milano) - Italy
Tel +39 02 95 96 931 Fax +39 02 95 74 27 58
www.apengroup.com apen@apengroup.com
Cod. X01330,01EN- ed. 1903
Specifications in this catalogue are subject to change without notice.

